



MM 100 N/117/1,6
MM 100 N/217/1,6

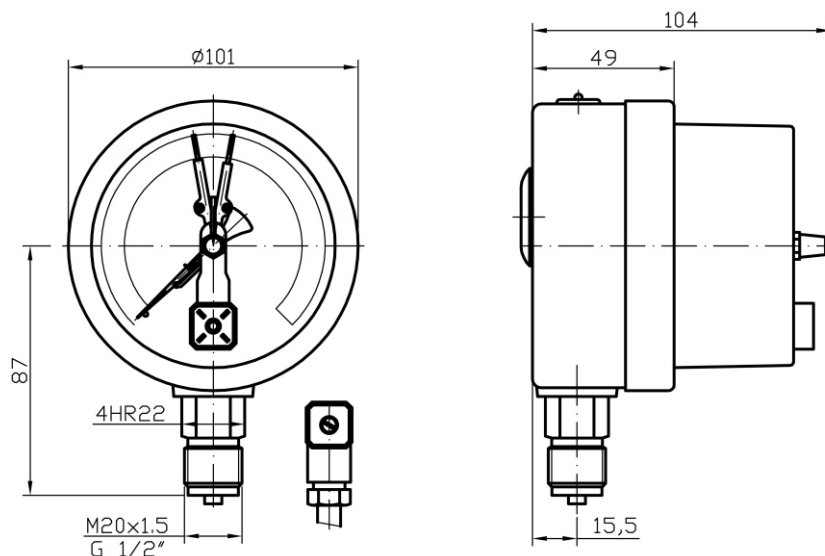
Application:

For all gaseous and low-viscosity liquid media that will not obstruct the pressure system or attack copper alloy parts. Suitable for industry, heating, water supply, air-conditioning, pneumatics. Pressure gauge for use and control of pressure facilities.

Technical parameters:

Construction	EN 837-1
Nominal size	100 mm
Accuracy class	1,6%
Scale range	0-100 kPa to 0-100 MPa, 0-1 bar to 0-1000 bar
Working pressure	static load 75% of full scale value dynamic load 65% of full scale value
Operating temperature	ambient 20.....+60°C medium max. +60°C
Temperature effect	when temperature of the pressure element deviates from reference (+20°C) ± 0,4%/10K
Movement	brass (stainless steel*)
Dial	white aluminium, dial marking black
Pointer	black aluminium
Lens	polycarbonate
Case	bayonet ring, stainless steel
Measuring element	bourdon tube (stainless steel*) < 100 bar "C" type > 100 bar helical type
Socket	brass (stainless steel*)
Connection	lower mount (LM)
Connection thread	M 20x1,5 (G1/2, other)*
Protection	IP 65 EN 60 529
Options	*
Electrical contacts	magnetic contacts M11, M12, M21, M22

* marked execution on special request



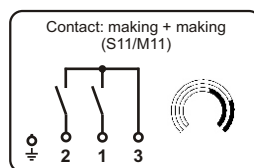
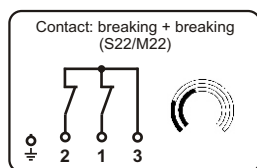
Identification:

Model	Execution	pressure range	flange	Weight
MM 100 N/117/1,6	Dry	0-1 bar ÷ 0-100 bar		560 g
MM 100 N/217/1,6	Dry	0-160 bar ÷ 0-1000 bar		560 g

Specifications for ELECTRICAL CONTACTS:

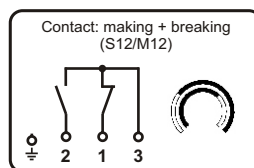
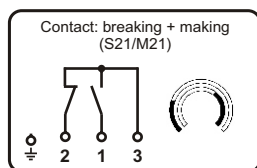
Operating voltage	250 V max.
Making current	1 A max.
Breaking current	1 A max.
Permanent current	0,6 A max.
Switch capacity	AC 30W, DC 50VA max.
Contact material	Ag80Ni20
Contact version	magnetic SNAP ACTION
Contact configuration	min-min, min-max, max-min, max-max
Produce	EN 60947

1. and 2. contact breaking when pointer reach set point



1. and 2. contact making when pointer reach set point

1. contact breaking, 2. contact making when pointer reach set point



1. Contact making, 2. Contact breaking when pointer reach set point

⊕ - green-yellow
1 - black - 2. Contact

2 - blue - 1. Contact
3 - brown - common pin