



**MM 100 R/417/1,6**  
**MM 100 RG/417/1,6**  
**MM 160 R/417/1 (1,6)**  
**MM 160 RG/517/1,6**

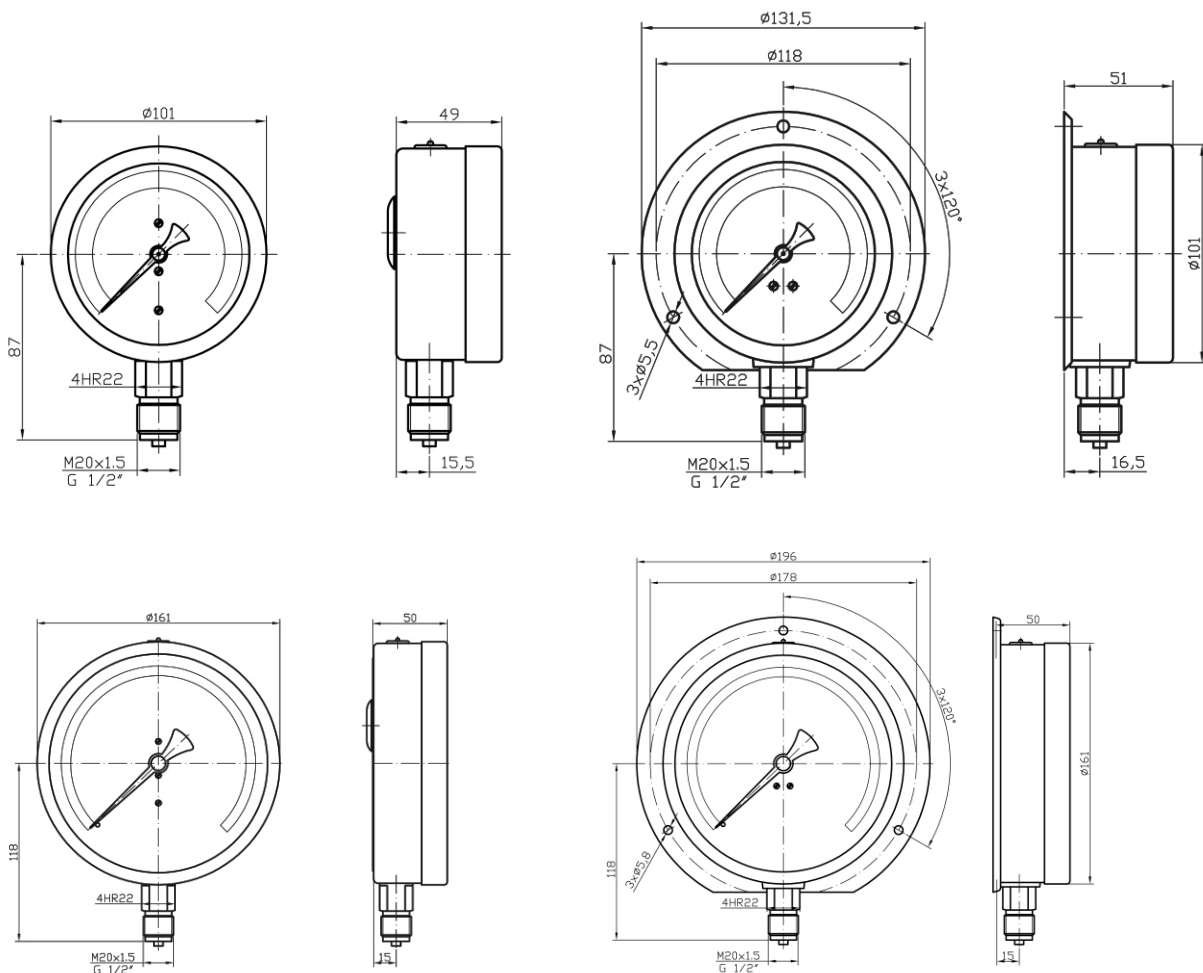
**Application:**

Suitable for measuring of pressures and temperatures in refrigeration systems especially:  
 R 134a, R 134a/R 22, R 22/R 12R 505, R12, R 404 A, R 407 A, R 410A, R 717 (NH<sub>3</sub>)  
 Dedicated for media which do not obstruct stainless steel, parts.  
 With liquid filled case for applications with high dynamic pressure pulsations or vibrations.

**Technical parameters:**

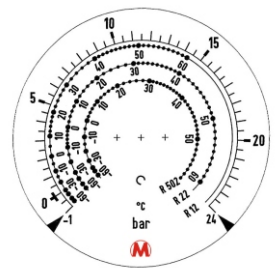
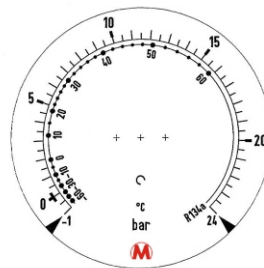
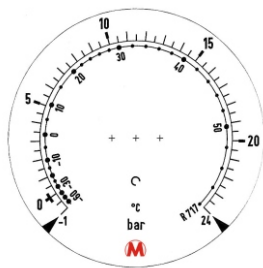
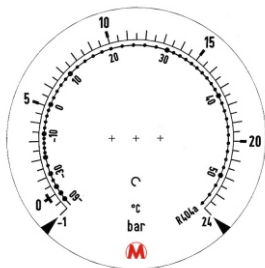
Construction:	EN 837-1
Nominal size:	100 mm, 160 mm
Accuracy class:	1%(1,6%)
Scale range:	-1...0...9 bar, -1...0...15 bar, -1...0...24 bar
Working pressure:	static load 75% of full scale value dynamic load 65% of full scale value
Operating temperature	ambient -20.....+60°C without liquid filling ambient -20.....+60°C with liquid filling medium max. +80°C without liquid filling medium max. +80°C with liquid filling
Temperature effect:	when temperature of the pressure element deviates from reference (+20°C) ±0,4%/10K
Movement:	brass
Dial:	white aluminium, dial marking black for pressure and dial marking colour for temperature
Pointer:	black aluminium
Lens:	glass (laminated safety glass)*
Case:	bayonet ring, stainless steel
Measuring element:	bourdon tube 1.4571 ≤ 60 bar „C“ type > 60 bar helical type
Socket:	stainless steel 1.4301 (1.4571)*
Connection:	lower mount (LM)
Connection thread:	M 20x1,5 (G1/2, other)*
Protection:	IP 65 EN 60 529
Filling:	glycerine (silicone)*
Options:	backward flange* dial for temperature of refrigeration systems at request

\* marked execution on special request



## IDENTIFICATION:

model	execution	pressure range	flange	weight
<b>MM 100 R/417/1 (1,6)</b>	dry	-1...0...9 bar,-1...0...15 bar,-1...0...24 bar	backward (on request)	500 g
<b>MM 100 RG/417/1,6</b>	glycerine	-1...0...9 bar,-1...0...15 bar,-1...0...24 bar	backward (on request)	810 g
<b>MM 160 R/417/1 (1,6)</b>	dry	-1...0...9 bar,-1...0...15 bar,-1...0...24 bar	backward (on request)	1050 g
<b>MM 160 RG/417/1,6</b>	glycerine	-1...0...9 bar,-1...0...15 bar,-1...0...24 bar	backward (on request)	1895 g



Specifications are subject to change without notice

KL 100\_417CH - 2008/03 E